

SEPTEMBER NEWSLETTER 2011

Latest Developments

Nokia Golf Academy



Recently installed is the GPS Ultimate Golf Studio at Nokia, in the image you will notice PGA Professional Juha Pentikainen, is teaching his student important aspects of the golf swing. Juha spent many months reviewing the world's leading teaching systems, before choosing what he feels is the most advanced teaching system, as well as one that is easy to operate. The golf simulator is integrated at Nokia with bowling, snooker, bar billiards, sauna, sports bar and a restaurant. Several teaching professionals throughout Finland; are due to install the Ultimate Golf Studio and the Ultimate Golf Academy, during this autumn period.



ChangSha Golf Club



Currently under development in ChangSha City is a unique indoor golf club, located in Hunan province, China, which is due to open in a few weeks' time. Featuring two Platinum GPS Golf Simulators and two Gold GPS Golf Simulators, within a very plush members club environment. No expense has been spared, showcasing the simulators, in a high quality cosmetic layout. Enabling the membership to have the perfect place to be entertained, enjoy their game and be taught golf to a high standard.



Paris Leisure Complex



Issy les Moulineaux have recently installed the Platinum GPS Golf Simulator at the Parc Municipal des Sports; Paris's premier leisure complex. So that all Parisian leisure customers can use the facility for game play, practice, contests and lessons, as part of the membership. The facility is already in discussions to add the DV High Speed Camera System, so upgrading to the GPS Ultimate Golf Academy, as requested by their members. The golf amenity is being used alongside many other sports amenities such as athletics, soccer, tennis, fitness training, body building and basketball.



Upmarket Games Room



Pro Shot Sports met up with a client in 2010, to discuss his new home under construction, which originally included an Indoor Pool downstairs. He then realised the pool would not get used enough and changed the downstairs into a massive, Upmarket Games Room with home cinema, pool table, bar and golf simulator. After testing the leading Golf Simulators, he chose the best golf simulator available, this was recently installed into his new home.

"The system has exceeded my wildest dreams. I cannot believe how accurate it is and how good the finish is. This will see me through old age.

Thank you." - Ellis Dugard, Customer



Golf Ball Fitting



Recently released is the world's most comprehensive golf ball fitting facility. Fully embedded, within the GPS Virtual Ranges and Virtual Chipping practise areas. This user friendly custom ball fitting service enables golfers and professionals alike, to be fitted with the correct golf ball that best matches their own shot performance. Due to the accuracy of the 3D High Speed Camera Technology, players can test their own golf clubs, with up to 5 different golf balls in one custom fitting session. To determine which make and model of golf ball, will ensure the best possible ball flight, on the golf course. Taking into consideration ball characteristics for core type, skin type, dimples, feel, make and model of the golf ball. When using data for ball velocity, back spin, side spin, vertical launch angle, horizontal launch angle, shot height and the ball flight required.

driving range hole 1 par 4 - 302y 1W Peter Roberts player Sports Coach

Ball Fitting

name: Peter Roberts skin: zylon
 make: nike core: 4 piece
 model: one tour feel: soft medium hard
 demo: nike one tour

	distance	carry	ball speed	club speed	path	face v.	launch h.	launch	back spin	hits
model a callaway tour i (s) regular	225y	180y	128.5mph	94.8mph	Out 1.3°	Cl 1.0°	10.1°	L 1.1°	2368rpm	4
model b srixon z-star pure white regular	202y	157y	119.7mph	89.0mph	In 1.3°	Cl 0.8°	10.4°	R 0.3°	2273rpm	4
model c titleist nxt tour regular	218y	171y	126.2mph	69.6mph	Out 0.5°	Op 0.3°	9.8°	L 0.1°	2266rpm	4
model d nike one tour regular	213y	163y	124.8mph	92.1mph	In 0.2°	Cl 0.8°	9.5°	L 0.3°	2146rpm	5
model e taylor-made tour burner regular	225y	179y	128.9mph	95.3mph	Out 0.8°	Op 0.3°	9.8°	L 0.3°	2299rpm	4

results delete shot delete all print ok

driving range hole 1 par 4 - 302y 1W Peter Roberts player Sports Coach

ball fitting

name: Peter Roberts skin: zylon
 make: nike core: 4 piece
 model: one tour feel: soft medium hard
 demo: nike one tour

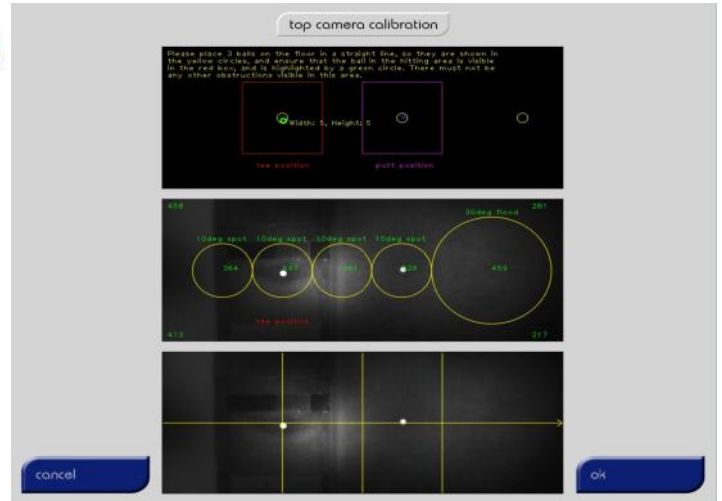
	distance	carry	ball speed	club speed	path	face v.	launch h.	launch	back spin	hits
	203y	157y	121.5mph	90.0mph	straight	square	9.8°	0.0°	2178rpm	1
	207y	157y	123.2mph	90.7mph	Out 2.0°	Cl 1.0°	9.2°	L 1.5°	2066rpm	2
	191y	140y	117.4mph	86.6mph	straight	square	9.3°	0.0°	1982rpm	3
	214y	161y	125.6mph	92.1mph	In 3.0°	Cl 4.0°	9.1°	L 0.5°	2062rpm	4
	249y	202y	136.2mph	100.9mph	straight	Op 1.0°	9.8°	R 0.5°	2445rpm	5
	213y	163y	124.8mph	92.1mph	In 0.2°	Cl 0.8°	9.5°	L 0.3°	2146rpm	5

ball comparisons delete shot delete all print ok

GPS Current Developments



Sports Coach is currently working on several new developments, which will be released by the end of this month. Camera Calibration is now fully embedded into the simulator program, so that the simulator is the easiest to install and serviced golf simulator in the world. Contest Leader boards are being significantly enhanced with separate displays for contest leader board and post shot screens. The new leader board allows the background image to be changed like the golf course photo, or sponsors image. Entering player name, email and phone details, during the contest, either locally or remotely and saving the data for marketing purposes.



Sports Coach Systems Limited, Curtis Road, Dorking, London, England.

Tel +44 (0) 1306 741888 Fax +44 (0) 1306 877888

Email: Sales@Sports-Coach.com Web: WWW.Sports-Coach.com Blog: <http://Sports-Coach-Systems.Blogspot.com>

Manufacturer of Golf Simulators and GPS Architecture Developer