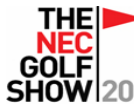


### Golf Shows

During the first few months of this year many distributors have utilised the GPS 3D Golf Simulator at several golf shows, throughout Europe. Resulting in outstanding feedback from golfers, who have been truly amazed at the superb graphical picture quality. The excellent levels of accuracy for the ball flight; due to the superb performance of the 3D High Speed Camera Technology. Clients have made very favourable comments regarding the comprehensive course library, the flexible simulator setups, the affordable pricing of the simulators, as well as the unique free life time software upgrade support. Overall the GPS 3D Golf Simulator has been the Star of this year's following golf shows.



### GPS Driving Range

Recently added to the GPS Golf Simulator is the Virtual Driving Range, which is a traditional flat outfield with signage. By having a flat outfield means golfers, can truly know their exact performance with each of their own golf clubs. Enabling golfers to practise all types of shots; as well as being given a lesson or club fitted. It is now possible to alter the defaults, whilst still in the driving range, which speeds up navigation. Cosmetically several clients have already commented that this is the most picturesque driving range, that they have witnessed on any golf software package.

After every practise shot it is now possible to have Automatic Replays of shots, such as reverse replay or forward replay or overhead replay. With the detailed post shot screen appearing

automatically after the replay. Giving the golfer a vast amount of detailed information, about their own shot performance. Another amazing additional feature that has been implemented, is the ability to select the exact wind speed and the wind direction.



|           | avg    | max    | min   | last shot |
|-----------|--------|--------|-------|-----------|
| distance  | 296    | 310    | 283   | 318y      |
| carry     | 264    | 283    | 245   | 289y      |
| roll      | 32y    | 38y    | 26y   | 29y       |
| to pin    | 188y   | 202y   | 175y  | 175y      |
| ball      | 157    | 163    | 150   | 167 mph   |
| club      | 117    | 122    | 111   | 122 mph   |
| face      | 0°     | 0p-3°  | 01-2° | 01p-2°    |
| path      | Out 1° | Out 2° | 0°    | Out 2°    |
| side spin | 163    | 331    | 0     | 303rpm    |
| back spin | 2030   | 2272   | 2188  | 2272rpm   |
| h. launch | 10.3°  | 12.0°  | 81.5° | 12.8°     |
| v. launch | 16.5°  | 19.2°  | 16.1° | 19.0°     |
| acc       |        |        |       |           |
| off line  | R14°   | L17°   | R15°  | L17°      |



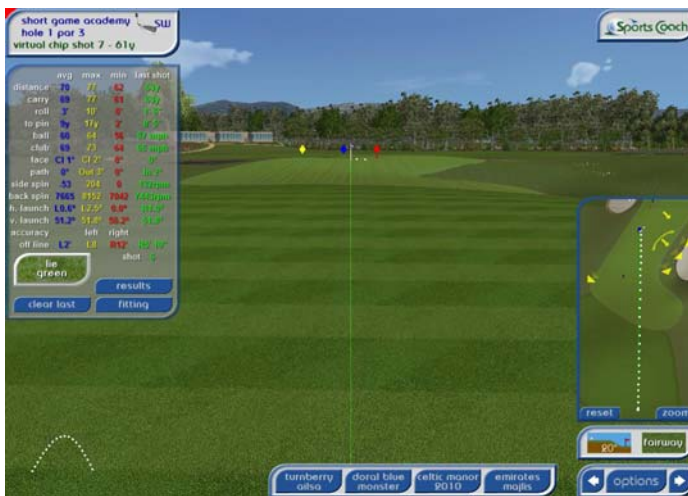

| mulligan         |             | player 1 - shot 2 |           | lie = fairway |           |
|------------------|-------------|-------------------|-----------|---------------|-----------|
| club speed       | 128.9 mph   | distance          | 383 yards | to cup        | 161 yards |
| ball speed       | 173.7 mph   | carry             | 303 yards | elevation     | -2°       |
| swing path       | in-out 3.0° | back spin         | 3403 rpm  | shot height   | 138'      |
| club face        | square      | side spin         | -382 rpm  | flight time   | 7.88 secs |
| horizontal angle | right 1.5°  | vertical angle    | 10.7°     | hit factor    | 1.35      |

## Short Game Academy

For the very first time in golf simulation a comprehensive and professional short game academy, has been created. Previously no company has developed a short game academy, due to the extreme levels of accuracy needed, for all short shots, to be realistically reproduced.

Designed to allow all PGA Professionals to teach golfers, to even higher levels of technical ability indoors compared to outdoors. Enabling professionals to practise and teach all important aspects of the short game. As well as being able to teach, what ever the weather conditions or time of day, year round.

Every type of approach shot can be practised such as full pitch shots, flop shots, bunker shots and chip and run shots. Whether those shots are played from the fairway, semi rough, rough, long grass or out of the 4 styles of bunker. The short game academy is 143 yards long x 90 yards wide and has 5 separate pin positions that can be selected. Using the mini map allows any of 5 flags to be chosen and any starting position on the extensive 360 degree short game academy.



## GPS Putting Academy

The extensive contoured green measures some 210' long x 60' wide, with a choice of 5 cups to putt too. Using the mini map allows the golfer to practise any length of putt and any type of break. Such as uphill putts, downhill putts, right to left breaking putts and left to right breaking putts. The actual stimp speed of the green can be selected, enabling the golfer to practise every type of putt possible. Golfers will be able to hone their game year round, enabling them to continually improve their putting technique. Whilst PGA Professionals can utilise this impressive facility, to give their clientele regular putting lessons.



Sports Coach Systems Limited, Curtis Road, Dorking, Surrey, England  
 Tel +44 (0) 1306 741888 Fax +44 (0) 1306 877888  
 Email: [Sales@Sports-Coach.com](mailto:Sales@Sports-Coach.com) Web: [WWW.Sports-Coach.com](http://WWW.Sports-Coach.com)

**Manufacturer of Golf Simulators**  
 and GPS Architecture Developer